

Step 1: Create a Multi PCode Import Map

- Login to the administrative portion of the Corporate Suite software.
- Select the correct tax year, filing entity, & form type from the upper left menu options

1099 PRO 1099 Pro for Corporate Suite

File Reports Forms Filing Utilities Help

Current Filer: MISC1
65-4894910
Misc 1

Select Another Filer Manage

For Tax Year: 2019

Current Form: 1099-MISC

- Select the "Import Forms" Option from the left-hand menu under "Preparing My Forms"

1 Preparing My Forms

Work With My Tax Forms

Import New Tax Forms

Form Totals Reports

- Select "Create/Manage/Print Import Maps", make sure the correct form type is selected from the menu, and then choose "Select" to view all import maps for the selected form type.

1 Preparing My Forms

Work With My Tax Forms

Import New Tax Forms

Form Totals Reports

Begin a new 2019 Import Process

Create/Manage/Print Import Maps

Completed and In-process 2019 1098/1099/5498/W-2G/Puerto Rico S

Use the options below to view, report, finish or reset (void) prior Import

Form Type: - All Forms - Status: Show all sessions

Set date range: All Dates For Selected Year

Form Selection

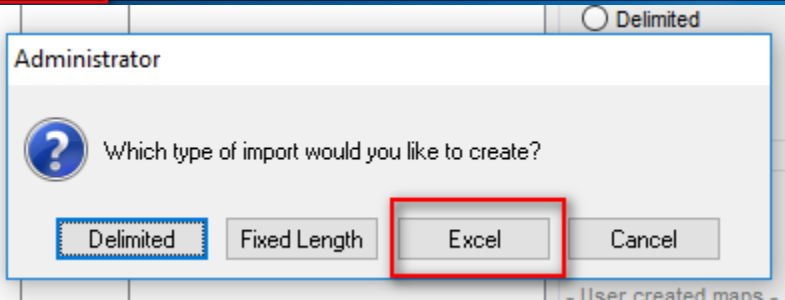
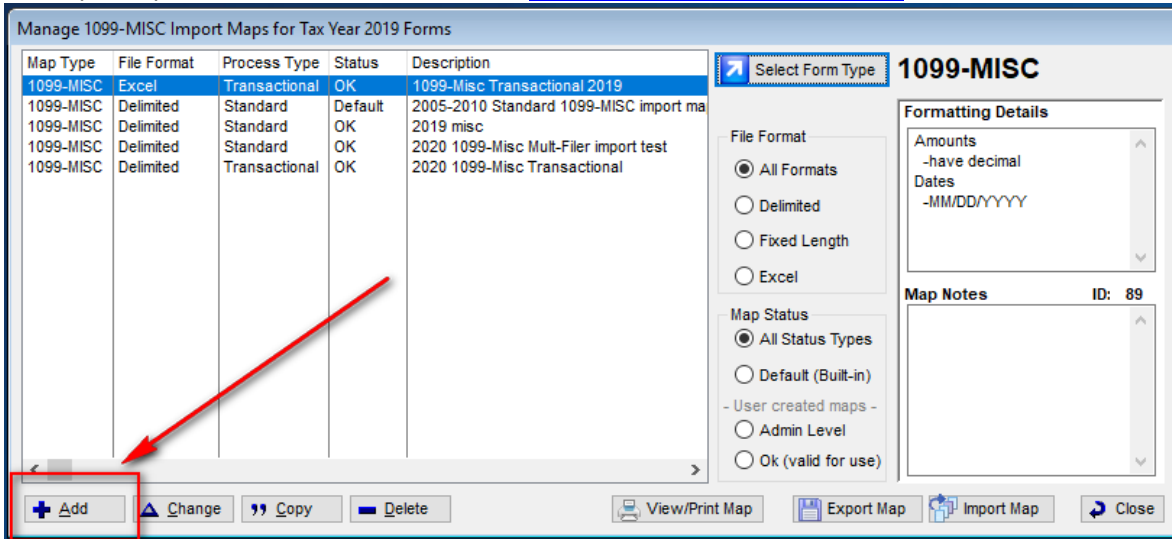
Select a Tax Year 2019 Form Type

The form you select will be used in the current process

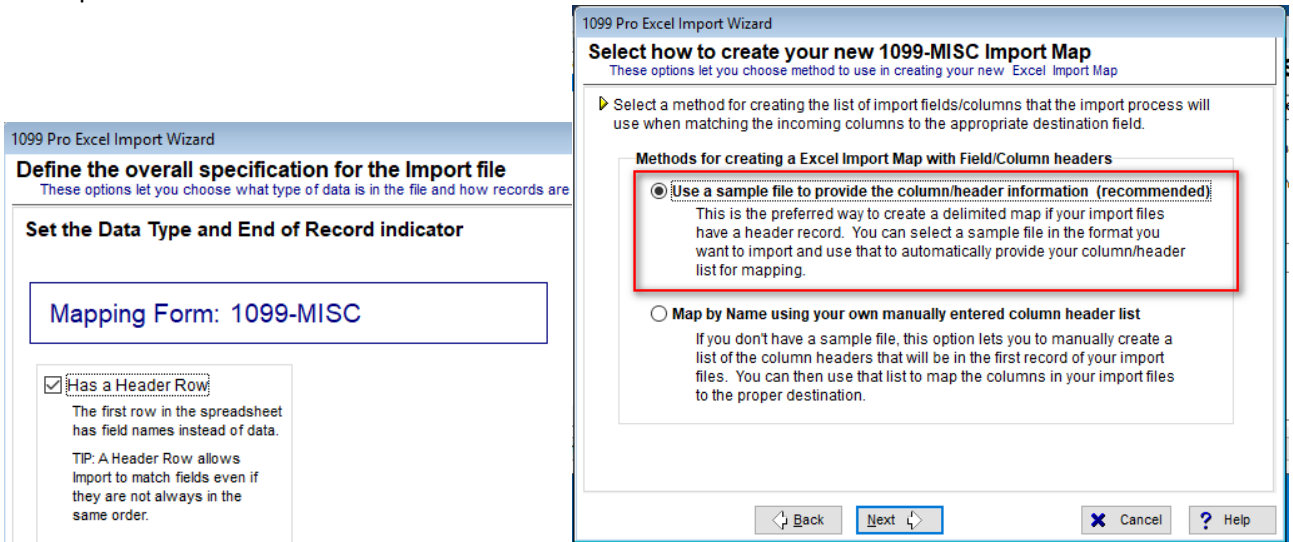
Form Name	Description
1042-S	Foreign Person's U.S. Source Income Subject to Withholding
1095-B	Health Coverage
1095-C	Employer-Provided Health Insurance Offer and Coverage
1097-BTC	Bond Tax Credit
1098	Mortgage Interest Statement
1098-C	Contributions of Motor Vehicles, Boats, and Airplanes
1098-E	Student Loan Interest Statement
1098-F	Fines, Penalties, and Other Amounts
1098-Q	Qualifying Longevity Annuity Contract Information
1098-T	Tuition Payments Statement
1099-A	Acquisition or Abandonment of Secured Property
1099-B	Proceeds From Broker and Barter Exchange Transactions
1099-C	Cancellation of Debt
1099-CAP	Changes in Corporate Control and Capital Structure
1099-DIV	Dividends and Distributions
1099-G	Certain Government and Qualified State Tuition Program Payments
1099-H	Health Coverage Tax Credit (HCTC) Advance Payments
1099-HC	MA Health Care Coverage
1099-INT	Interest Income
1099-K	Merchant Card and Third Party Network Payments
1099-LS	Reportable Life Insurance Sale
1099-LTC	Long-Term Care and Accelerated Death Benefits
1099-MISC	Miscellaneous Income
1099-OID	Original Issue Discount
1099-PATR	Taxable Distributions Received From Cooperatives

Select Cancel Help

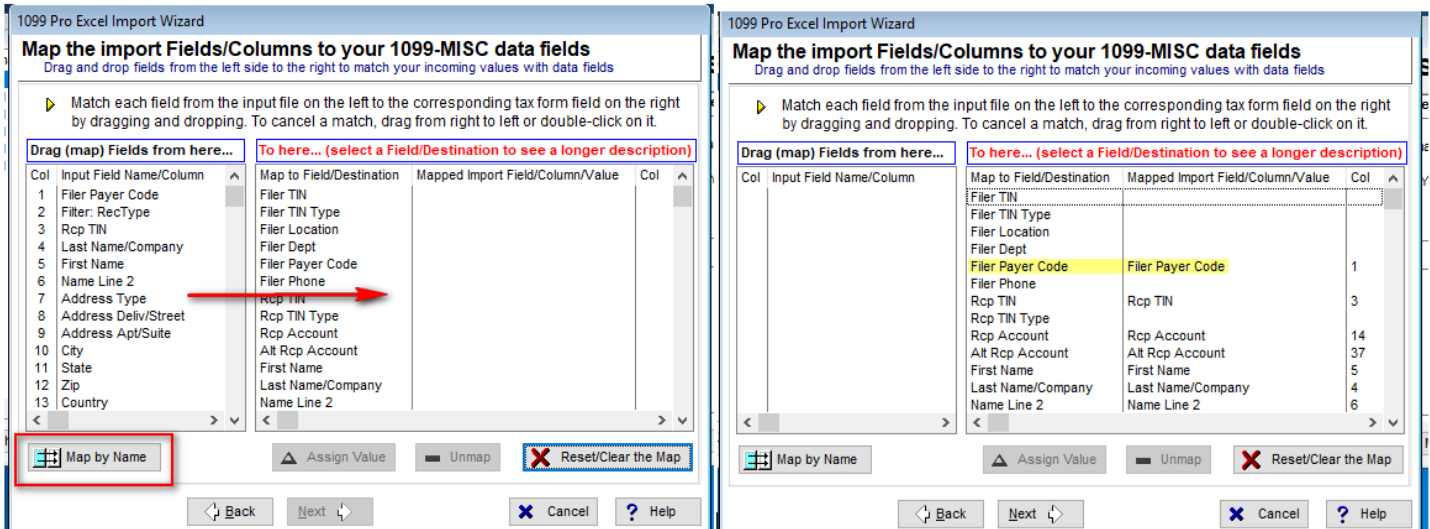
- Select “Add” on the bottom left to create a new map. Select the File type of the import. In this example Excel will be used. The sample Import File can be downloaded at [Sample Multi-PCode 1099-Misc](#)



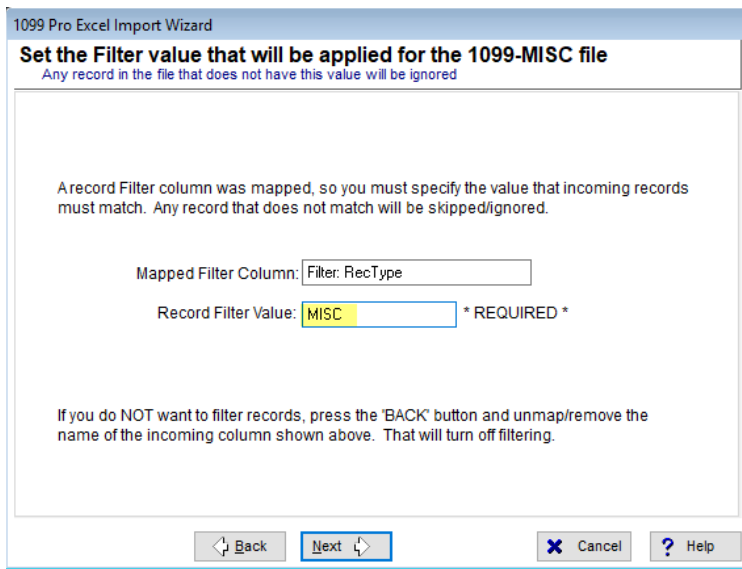
- Proceed through the Import wizard. For this example keep “Has a Header Row” to match our sample file which has a head row. Then select “Use a sample file to provide the column/header information” Then browse to where you saved the sample file.



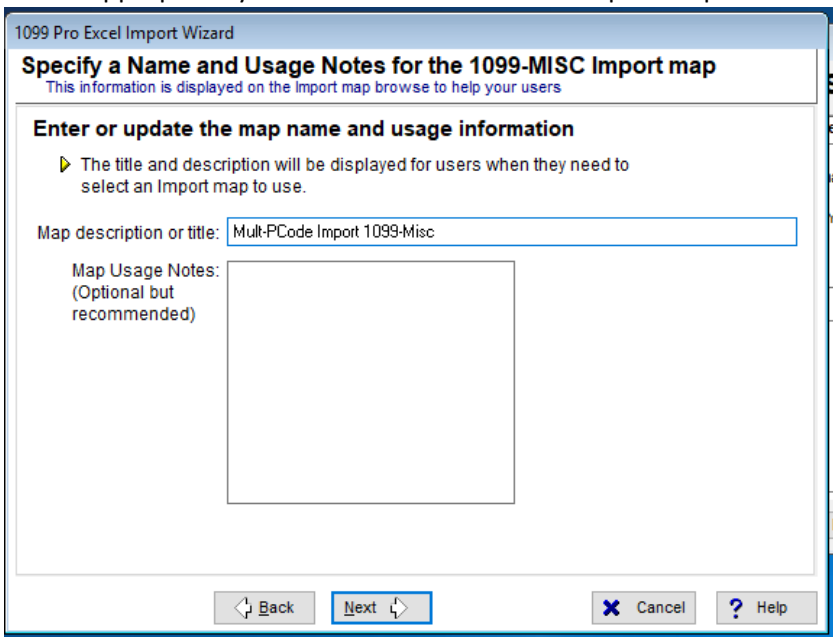
- At the mapping section, selecting “Map by Name” will automatically map the names in the sample file because the name will be matching. Alternatively you can drag over your own column header from the left box to the right box on top the field you would like to map your column header. The important head for this map to be Multi-PCode is the “Filer Payer Code” field.



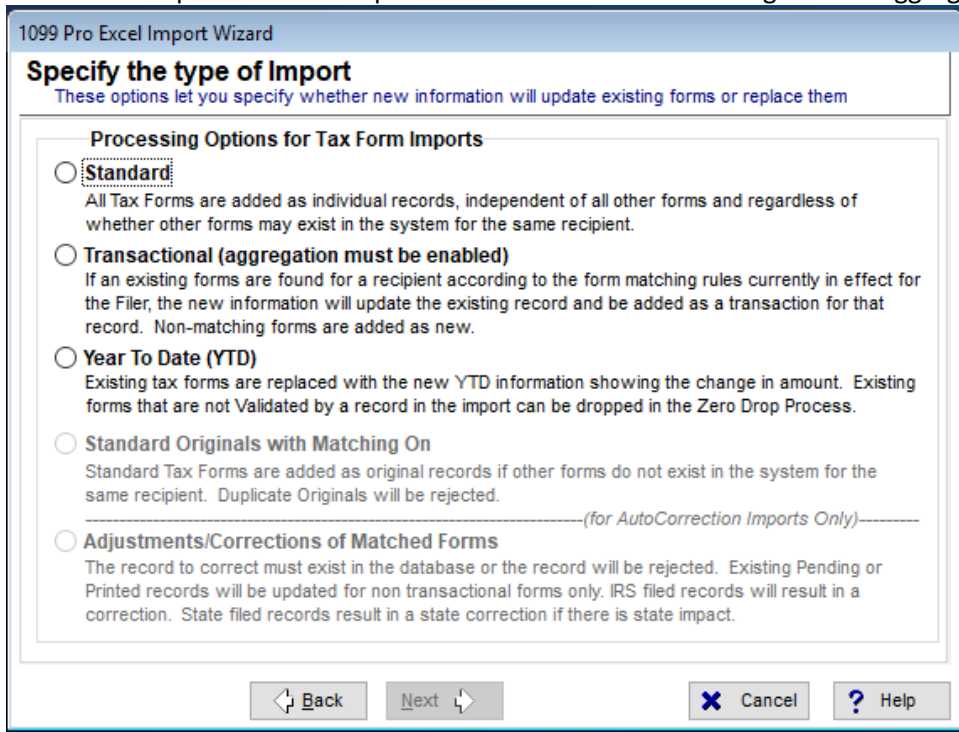
- Click “Next” to specify the Record Filter Value. Please enter the Value under the column “Filter: RecType”. Any rows in the import file that does not have the value you define on this screen will be excluded from the import.



- Please specify your preferred formatting and recipient matching criteria. When specifying a name for the map, please name it appropriately to reflect this Multi-PCode import map.



- When you get to the "Specify the type of import" you can select from the 3 options. Please note what you select MUST be consistent to the import file and PCode aggregation settings. For this example we will select "Standard". All rows in the import file must import into Filers that are not configured for aggregation imports.



- Final step will give a summary of your map criteria. Click "Finish" to save and you will now see this map available to use for an import.

