

W-2 Pro v2021.15.30

Note: Your software must be on at least v2021.09.05 to apply this update.

Release Notes

New and improved:

- We added reset sessions for the **Service Bureau**, **Print**, and **Electronic Filing** to the **Audit Trail**. (WPRO-703)

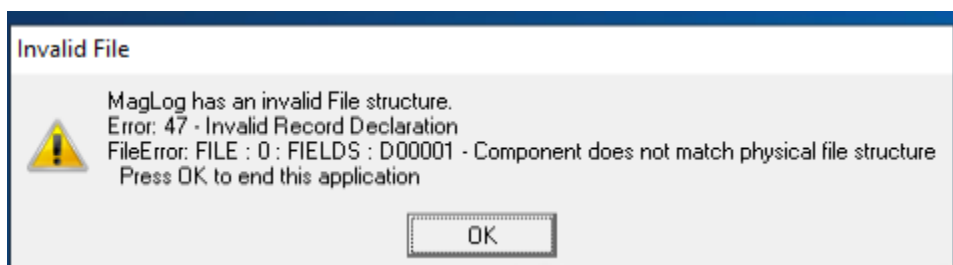
Bug fixes:

- Previously, for **Corrections**, the **Filer TIN Masking** default setting was triggering a TIN correction on printout. We fixed this issue. (WPRO-706)
- Electronic Filing:
 - Electronic File Wizard - Step 5 verbiage update to reflect SSA terminology. TCC updated to Submitter. (WPRO-692)
- Business Rules & Validation:
 - Rule R04 is now triggered. (WPRO-668)

v2021.15.30

Error After Update

If you receive the following error when running W-2 Pro after the update, you will need to manually update your ProW2T21 data files:



Follow these steps to manually update your W-2 Pro data files:

1. [Download](#) this **Fix1099.exe** file and move it to your **ProW2T21** folder.

2. Run the **Fix1099.exe** file.

3. Click the **OK** button.